



Kodak Polychrome Graphics better equipped to meet customers' needs

INFORMATION

Location: Rochester, NY
 Web site: www.kodak.com
 Industry: Graphics

CHALLENGE

Create a software solution capable of pinpointing and analyzing the source of colour quality issues.

SOLUTION

Affinity Systems designed and implemented the complete graphical interface as well as a multi-threaded server architecture and client-server protocol to support a range of spectral analysis devices.

TECHNOLOGIES

- Windows NT/2000
- C++
- MFC
- TCP/IP Sockets
- SQL Server
- Excel
- ODBC
- Java
- CodeBase

Kodak Polychrome Graphics (KPG) provides one of the broadest product and solutions portfolios available in the graphic arts industry today, including a wide range of conventional lithographic plate and computer-to-plate solutions, Kodak-branded graphic arts films, digital, inkjet, analog and virtual proofing products, as well as workflow solutions and colour management tools.

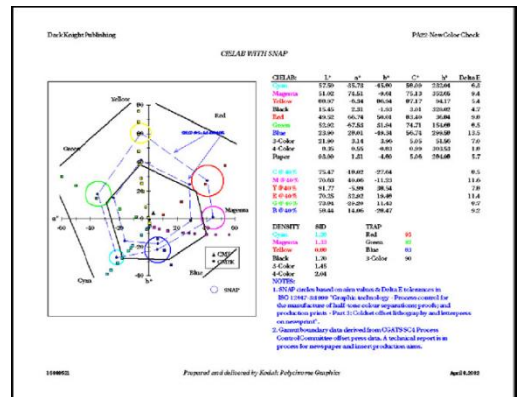
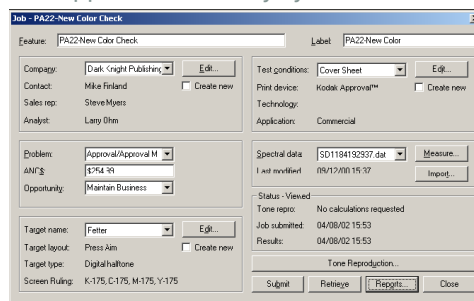
KPG approached Affinity Systems to develop Press Aim, a software solution that can help pinpoint and analyze the source of colour quality issues in a customer's workflow. A specially designed target is processed through the imagesetter, platesetter or proofing system to shop standards. The printed target is then measured using a spectrophotometer, and the data is processed to generate a series of reports that characterize and quantify the system.

OUR SOLUTION

Affinity Systems designed and implemented a total solution that embraced a two-tiered architecture. Client software, usually running on a laptop at a customer site, allows a Kodak technical specialist to scan a printed target using a spectrophotometer. The client software packages and transmits these readings to a server which analyzes the data using proprietary colour science analysis algorithms. The results of this analysis are returned to the client machine for reporting using a multitude of charts, graphs and tables. These analyses can be stored, indexed, searched and compared.

This total solution utilized a wide range of expertise from the Affinity Systems team. We implemented device support for a number of spectral analysis devices, specified and implemented the complete graphical interface, and designed and implemented the multi-threaded server architecture and client-server protocol. Our developers translated the customer's proprietary colour-analysis algorithms into C++.

Administrative utilities and installation software for both client and server were implemented, as well as many other supporting modules, to provide a professional fit and finish to the product. Finally, members of our team worked closely with KPG personnel to make the end product of this endeavour—the many charts, graphs, and tables—lucid and informative. The results of these efforts have provided KPG with a valuable tool for meeting their customers' needs.



CASE STUDY



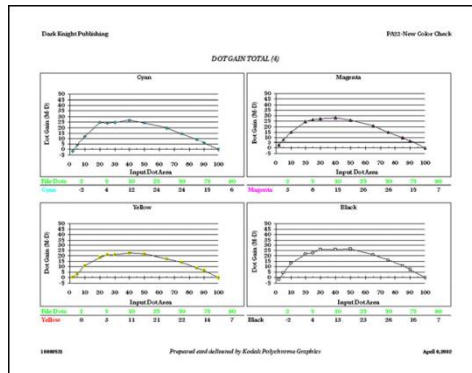
Software by Design

Kodak Polychrome
GRAPHICS



BENEFITS

- Able to measure and quantify the colour quality issues into a generated report.
- Analyses can be formatted into charts, graphs and tables which can be stored, indexed and searched for comparison.
- A Kodak Technical Specialist can scan a printed colour target using a spectrophotometer.



KPG provides two services to its customers using the Press Aim technology developed by Affinity Systems: the Colorflow Press Aim Analysis supports digital printers and presses, while the Colorflow Prepress Aim Analysis supports capture devices such as scanners and digital cameras.

Affinity Systems

1599 Hurontario Street, Suite 302
Mississauga, Ontario L5G 4S1

Tel: 905-278-9444

E-mail: sales@affsys.com

For more information, please visit:

www.affsys.com